

Foreedge

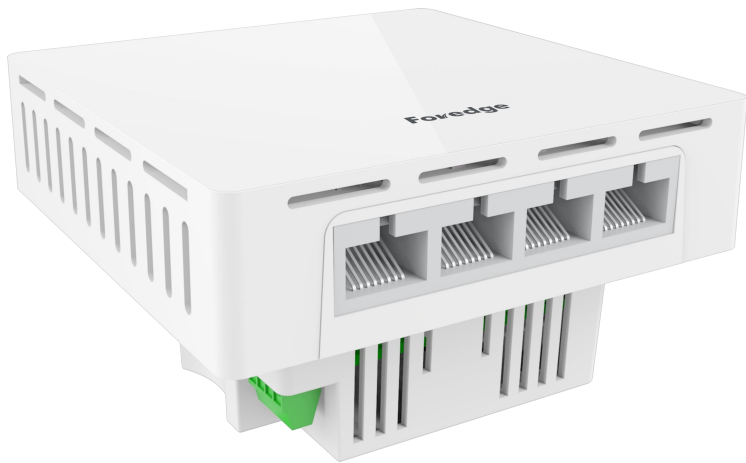
**Dual band AX1800 WIFI 6
wireless access point
W60AP**

Product Brochure

Shenzhen Fengrunda Technology Co., Ltd

Product Introduction :

W60AP is a high-performance, high-speed indoor 11ax panel AP that can provide 2.4G and 5.8GHz dual-band wireless services, providing a cleaner wireless environment and more stable wireless access.



Product Features :

- **Simultaneous operation of 2.4GHz (600Mbps) and 5GHz (1200Mbps) for a maximum wireless throughput of 1800Mbps**
- **Support hardware watchdog function, automatic recovery of abnormal equipment , maintenance-free**
- **The heat sink is treated with a special surface coating to achieve a more ideal heat dissipation effect.**
- **Support 48V PoE**

Specifications :

| Specifications | | | | | |
|-----------------------------------|---|-------|---------|------|---------|
| Product number | W60AP | | | | |
| Flash | SPI NOR 16MB | | | | |
| Memory: | Internal 128MB | | | | |
| 2.4G operating frequency band | 2.4GHz – 2.484GHz | | | | |
| 2.4G WIFI transmission protocol | 802.11 b/g/n/ax | | | | |
| 5G operating frequency band | 5.150GHz ~ 5.850GHz | | | | |
| 5G WIFI transmission protocol | 802.11 a/n/ac/ax | | | | |
| Built-in antenna 2.4G | Built-in PCB antenna*2, each gain: 3dBi | | | | |
| Built-in antenna 5G | Built-in ceramic antenna*2, each gain: 3dBi | | | | |
| Maximum rate | 5G: 1200Mbps 2.4G: 600Mbps | | | | |
| Maximum supported wireless access | 100+ | | | | |
| 2.4G wireless power | 802.11b | 11M | 17±2dBm | 1M | 18±2dBm |
| | 802.11g | 54M | 16±2dBm | 6M | 17±2dBm |
| | 802.11n HT20 | MCS7 | 16±2dBm | MCS0 | 17±2dBm |
| | 802.11n HT40 | MCS7 | 15±2dBm | MCS0 | 16±2dBm |
| | 802.11ax HT20 | MCS11 | 15±2dBm | MCS0 | 16±2dBm |
| | 802.11ax HT40 | MCS11 | 15±2dBm | MCS0 | 16±2dBm |

Specifications :

| | | | | | |
|----------------------------|---------------|-------|----------|------|----------|
| 5G Wireless Power | 802.11a | 54M | 16±2 dBm | 6M | 17±2 dBm |
| | 802.11n HT20 | MCS7 | 15±2 dBm | MCS0 | 16±2 dBm |
| | 802.11n HT40 | MCS7 | 15±2 dBm | MCS0 | 16±2 dBm |
| | 802.11ac HT20 | MCS7 | 15±2 dBm | MCS0 | 16±2 dBm |
| | 802.11ac HT40 | MCS7 | 15±2 dBm | MCS0 | 16±2dBm |
| | 802.11ac HT80 | MCS9 | 14±2 dBm | MCS0 | 15±2dBm |
| | 802.11ax HT20 | MCS11 | 15±2 dBm | MCS0 | 16±2 dBm |
| | 802.11ax HT40 | MCS11 | 15±2 dBm | MCS0 | 16±2 dBm |
| | 802.11ax HT80 | MCS11 | 14±2 dBm | MCS0 | 15±2 dBm |
| 2.4G receiving sensitivity | 802.11b | 11M | -85dBm | 1M | -92dBm |
| | 802.11g | 54M | -72dBm | 6M | -90dBm |
| | 802.11n HT20 | MCS7 | -70dBm | MCS0 | -88dBm |
| | 802.11n HT40 | MCS7 | -68dBm | MCS0 | -86dBm |
| | 802.11ax HT20 | MCS11 | -60dBm | MCS0 | -85dBm |
| | 802.11ax HT40 | MCS11 | -56dBm | MCS0 | -85dBm |
| 5G reception sensitivity | 802.11a | 54M | -72dBm | 6M | -92dBm |
| | 802.11n HT20 | MCS7 | -70dBm | MCS0 | -90dBm |
| | 802.11n HT40 | MCS7 | -68dBm | MCS0 | -88dBm |
| | 802.11ac HT20 | MCS7 | -70 dBm | MCS0 | -90 dBm |
| | 802.11ac HT40 | MCS7 | -68dBm | MCS0 | -88dBm |
| | 802.11ac HT80 | MCS9 | -58dBm | MCS0 | -85dBm |
| | 802.11ax HT20 | MCS11 | -62dBm | MCS0 | -88dBm |
| | 802.11ax HT40 | MCS11 | -58dBm | MCS0 | -86dBm |
| | 802.11ax HT80 | MCS11 | -55dBm | MCS0 | -84dBm |

Specifications :

| | |
|---------------------------|--|
| 2.4G EVM | 802.11b:≤-10dB ; 802.11g:≤-25dB ; 802.11n:≤-28dB ; 802.11ax:≤-35dB |
| 5G EVM | 802.11a:≤-25 dB; 802.11n:≤-28 dB; 802.11ac:≤-32 dB; 802.11ax:≤-35 dB |
| Frequency deviation (ppm) | ±20ppm |
| Interface (WAN) | 1 10/100/1000M adaptive WAN port, support 48V POE power supply |
| Interface (LAN) | 4 10/100/1000M adaptive LAN ports (optional: 3 LAN ports + 1 telephone port) |
| POE | 802.3af |
| button | Reset button (press and hold for 6-10 seconds to restore to factory default settings) |
| Status Indicator | WAN light, LAN* 4Light, SYS light |
| Maximum power consumption | < 14W |
| ESD Testing | Air discharge: ±8KV, contact discharge: ± 4 KV |
| surge | Common mode 1 kV , differential mode 0.5 kV |
| Product Size | 86mm*86mm*48mm |
| weight | 0.28 kg |
| working environment | Normal operating temperature: -20°C to 40°C; Storage temperature: -40°C to 70°C; Humidity: 5% to 95% (no condensation) |

Software Features :

| | |
|-------------------|--|
| front page | Working mode: Fat AP mode and Thin AP mode |
| | Wireless AP download rate, wireless AP upload rate, running time |
| | Device information, device description, intranet information, WIFI information |
| | AP mode: The device covers other clients and devices with wireless network signals, and uses Ethernet to connect to other routers to access the WAN. |
| wireless function | SSID Broadcast |
| | Number of SSIDs: 4 (2.4GHz) + 4 (5GHz), support Chinese SSID |
| | Hide SSID function |
| | Wireless encryption: OPEN, WPA/WPA2PSK-TKIPAES WPA2PSK-TKIPAES |
| | Wireless MAC address filtering: support whitelist (100) |
| | Spectrum navigation (5G first) |
| | WiFi timer off function |
| | User isolation: isolation between wireless networks and isolation within APs |
| | Transmit power setting |
| | Wireless client number limit |

Software Features :

| | |
|-------------------|---|
| Internet function | Connection method: static address, obtained from the management server, obtained from the gateway |
| | DHCP server: It can be a built-in DHCP server or an external DHCP server |
| | Cloud Platform Server |
| Device Management | Backing up configuration information |
| | Restore configuration information |
| | reset |
| | Restart includes scheduled restart and immediate restart |
| | Firmware Upgrade |
| | Time management includes system display time and time synchronization |
| | System log |
| | Fat and thin AP switching function |